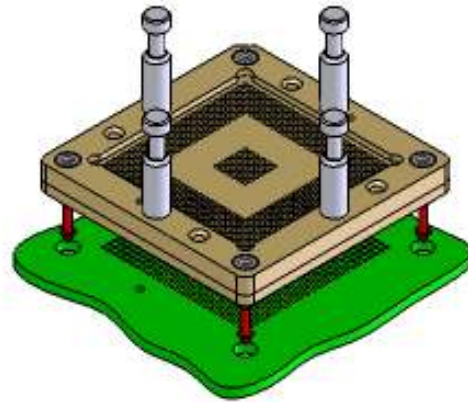


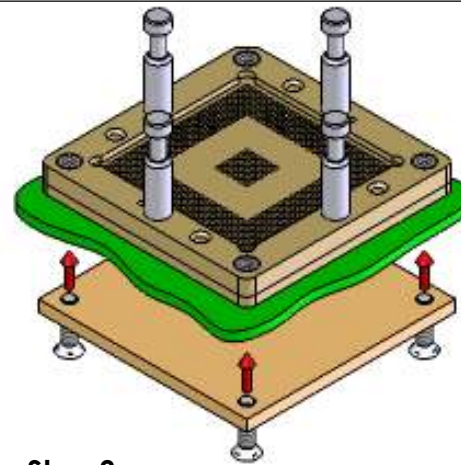
Step 1

Clean the top surface of the PCB & remove any residues



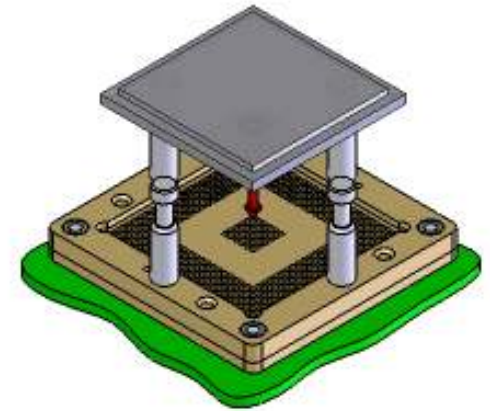
Step 2

Place the socket base into the PCB holes-locating pegs will prevent wrong socket placement



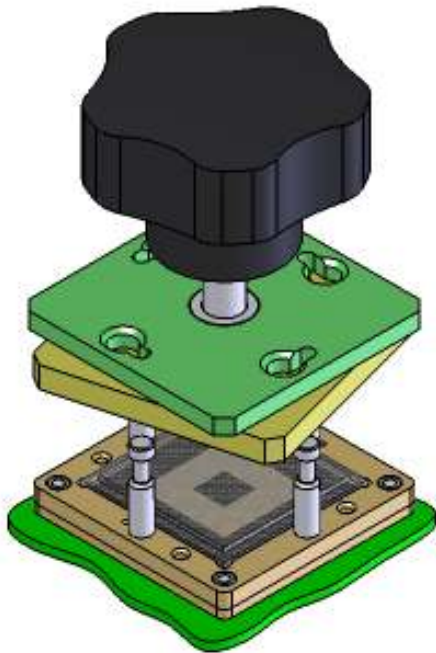
Step 3

Place the assembly board under the PCB and attach the assembly board to the socket base with the M2 screws



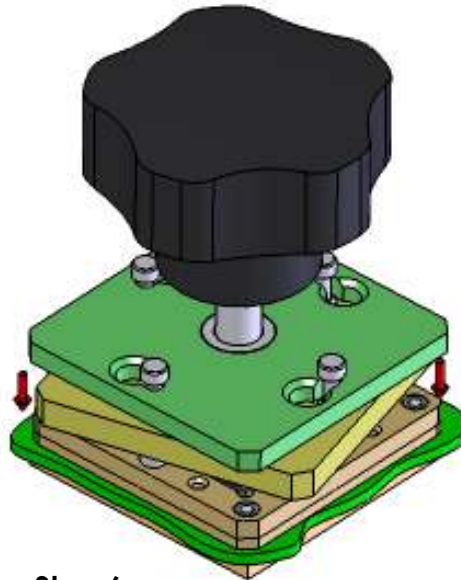
Step 4

Insert the chip into the socket base



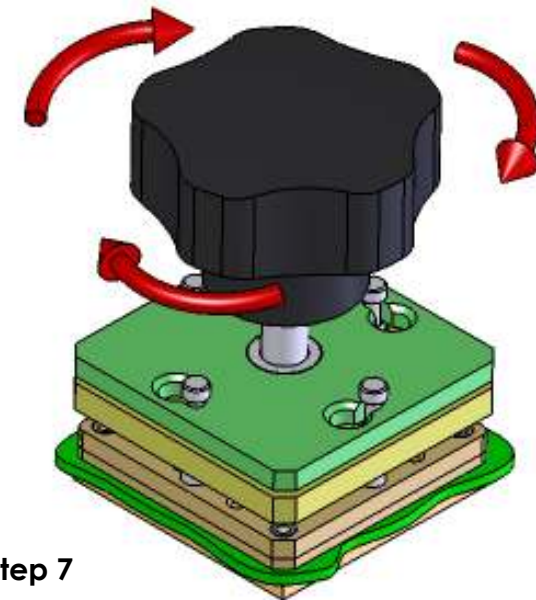
Step 5

Assemble the knob lock retainer onto the metal posts by turning the top plate by around 15°




Step 6

Close the top plate perpendicular to the socket base



Step 7

Turn the black knob clockwise until you feel a resistance

UNLESS OTHERWISE SPECIFIED: DIMENSIONS ARE IN MILLIMETERS SURFACE FINISH: GENERAL TOLERANCES: ± 0.10 LINEAR: ANGULAR:		Remark:			 www.e-tec.com	
"top view drawing"						
Patented		Visa	Date	Drawn by	Date	Visa
DRAWN		L.G	05.06.07	L.G	05.06.07	
CHK'D						
APP'V'D		K.S	05.06.07	Echelle: 1.5:1		TITLE: Fonctionnement
MFG				MATERIAL:		DWG NO. Knob-Lock Solderless
Q.A				WEIGHT:		0
The information contained in this drawing is proprietary to Happ AG and shall not be reproduced or disclosed in whole or in part or used for any design or manufacture except where such user possesses direct, written authorization from Happ AG				Fonctionnement Knob-Lock Solderless		Revision 0
G:\Konstruktion\Dessins Solidworks\Dessins\BGA\BPK\BPK456\BPK0456-10-09542-26AAA\Instruction Solderless Knob-Lock\Fonctionnement Knob-Lock Solderless						SHEET 1 OF 2