

# DMD Series - SO - DIMM Sockets

## 200-pin for DDR Module

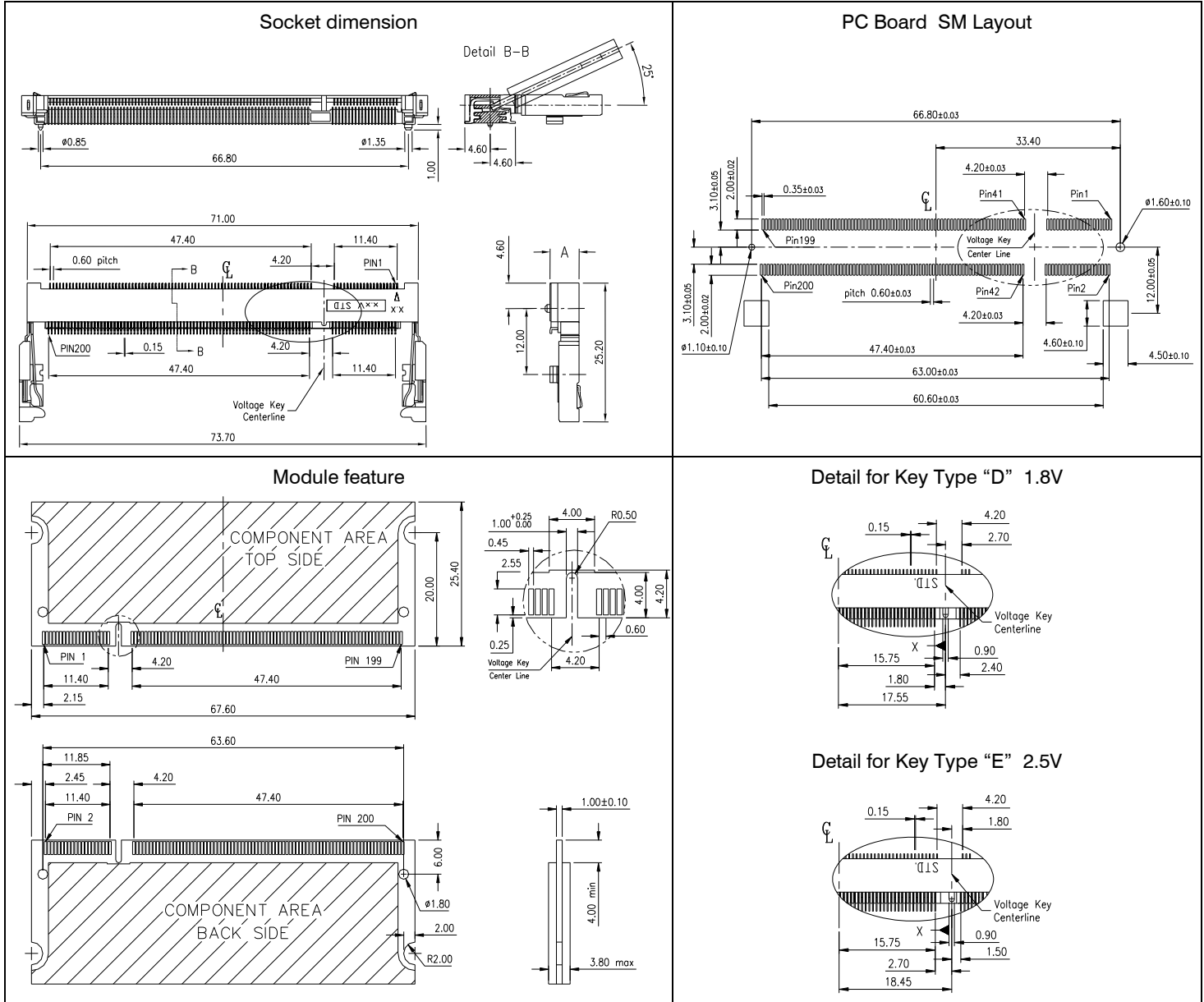
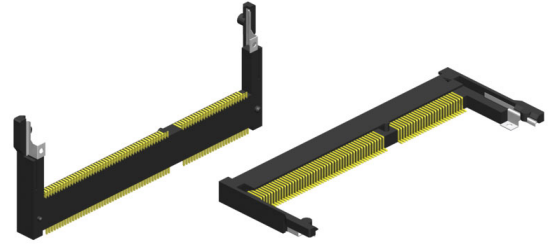


SO-DIMM sockets for **200-pin DDR Module** are made of hi-temp resistant LCP.

Insertion & extraction of the module can be made without any tools.

Positive polarization prevents wrong insertion of the module.

Contacts are designed with an anti-overstress feature for long contact life.



### Specification

Current rating	0.5 A	Insulator	(RoHS compliant) LCP <b>black</b> UL 94 V-0
Voltage rating	50 V AC	Contact	(RoHS compliant) Phosphor bronze
Insulation resistance	500 MΩ min. (initial) 100 MΩ max. (final)	Plating	(RoHS compliant) Au over Ni
Contact resistance	50 mΩ max.	Lifetime	25 cycles min.
Operating temperature	-40°C to +80°C min.	Latch	(RoHS compliant) Stainless Steel, Sn (leadfree) plated
Processing temperature	+250°C +0/-5° for 20~40 Sec.		

Pin	SDRAM "Standard" Socket Type	Connector Dimension "A"	Ordering Code	
			1.8 Volt Key Type "D"	2.5 Volt Key Type "E"
200 pin	Standard-Profile	5.20 mm	<b>DMD - 200 - RSD9 - 55</b>	<b>DMD - 200 - RSE9 - 55</b>

# DMD Series - SO - DIMM Socket

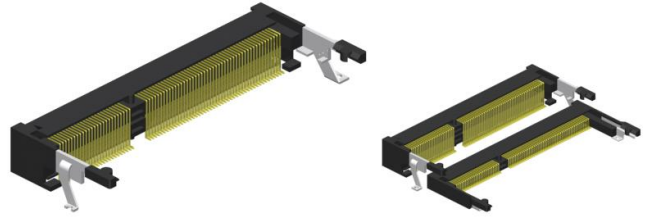
## 200-pin for DDR Module "9.20mm height"



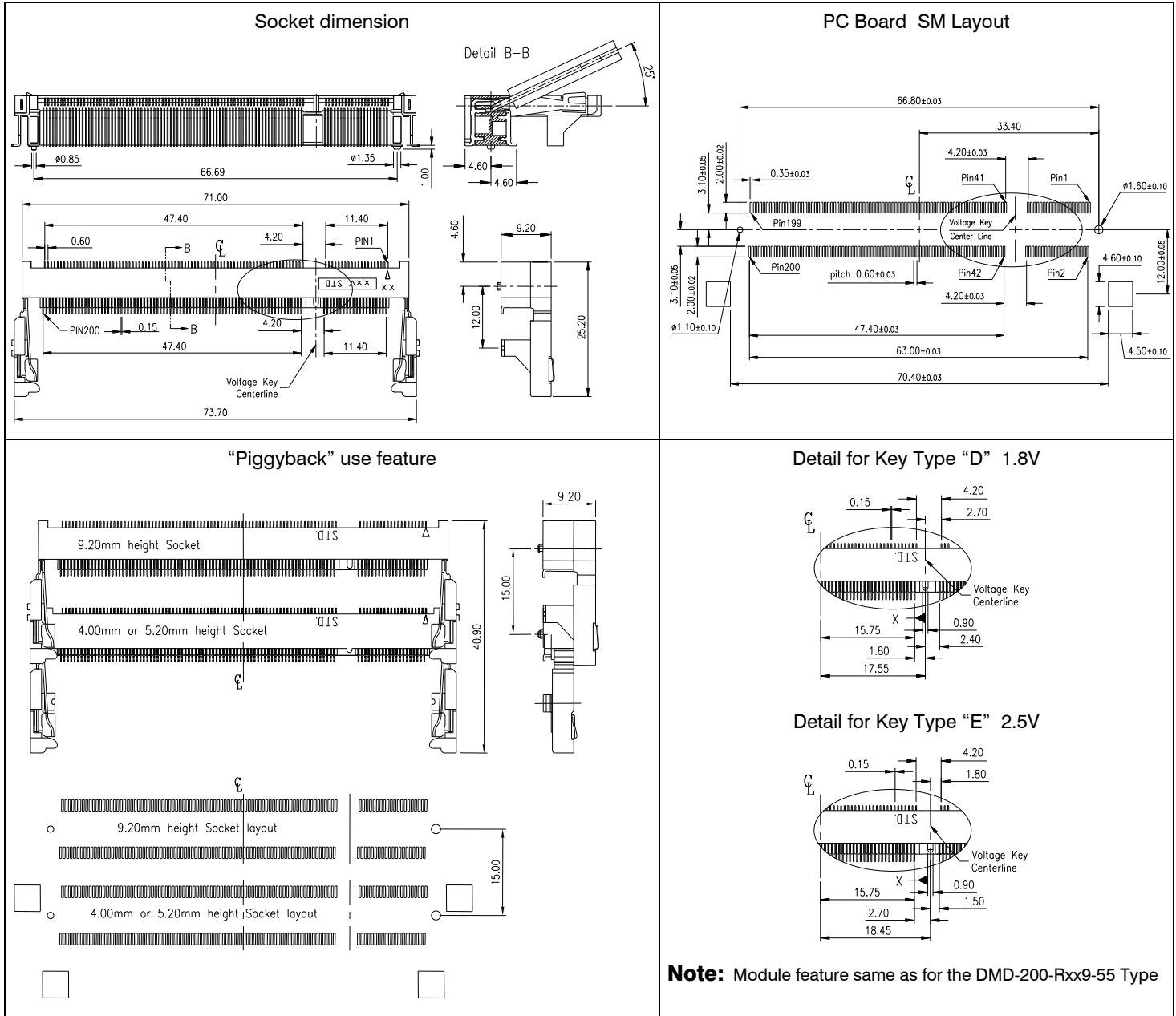
This **9.20mm height** SO-DIMM socket for 200-pin DDR Module, made of hi-temp resistant LCP, can be also used in combination with the 4.00mm & 5.20mm height type as **"Piggyback"**.

Insertion & extraction of the module can be made without any tool.  
Positive polarization prevents wrong insertion of the module.

Contacts are designed with an anti-overstress feature for long contact life.



Piggyback application



### Specification

Current rating	0.5 A	Insulator	(RoHS compliant) LCP <b>black</b> UL 94 V-0 ivory on request
Voltage rating	50 V AC	Contact	(RoHS compliant) Phosphor bronze
Insulation resistance	500 MΩ min. (initial) 100 MΩ max. (final)	Plating	(RoHS compliant) Au over Ni
Contact resistance	50 mΩ max.	Lifetime	25 cycles min.
Operating temperature	-40°C to +80°C min.	Latch	(RoHS compliant) Stainless Steel, Sn (leadfree) plated
Processing temperature	+250°C +0/-5° for 20~40 Sec.		

Pin	SDRAM "Standard" Socket Type	Connector Dimension "A"	Ordering Code	
			1.8 Volt Key Type "D"	2.5 Volt Key Type "E"
200 pin	"Piggyback" - Type	9.20 mm	<b>DMD - 200 - RPD9 - 55</b>	<b>DMD - 200 - RPE9 - 55</b>